



INN8

INN8 INVESTMENT PLATFORM

Core Funds

In collaboration with
Morningstar Investment
Management South Africa

About our Core Funds

- The INN8 Core Funds list can help you make confident investment decisions.
- These funds are FSCA-approved; they were researched and chosen by Morningstar Investment Management South Africa ('Morningstar').

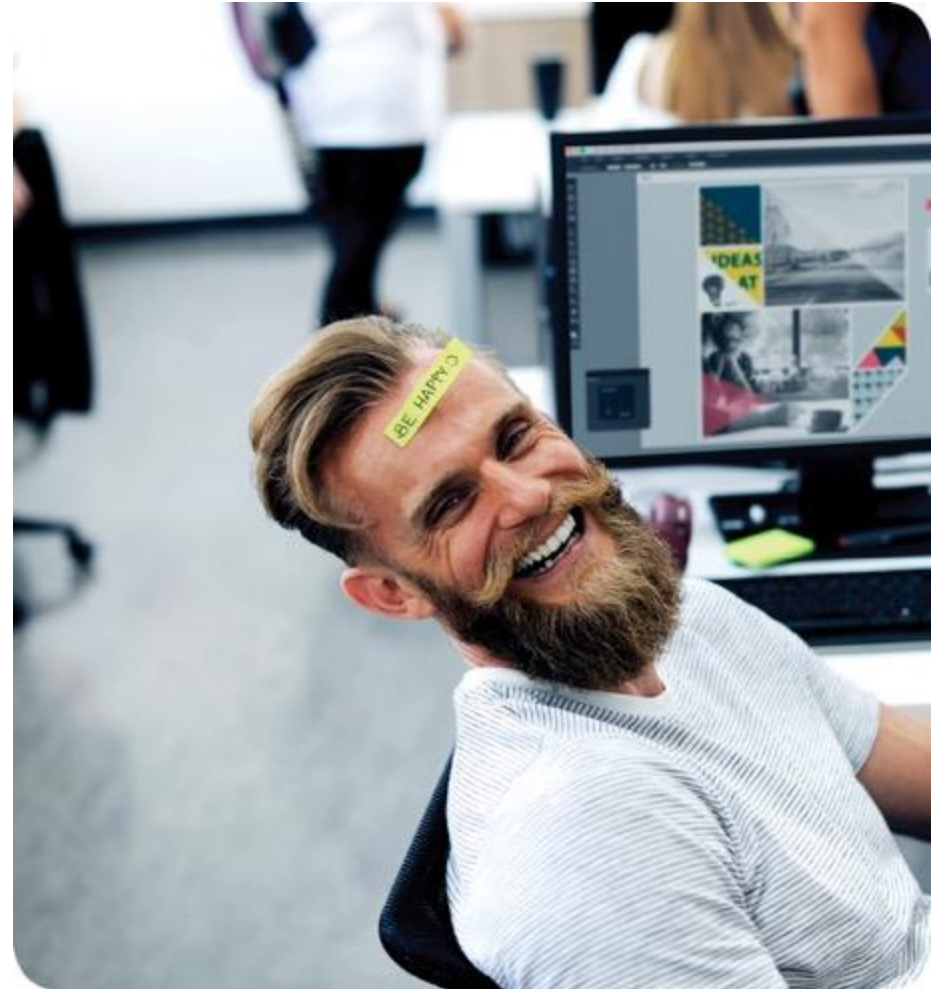


How the Funds are selected

Morningstar identifies five key areas that are believed to be crucial in predicting the future success of funds: People, Parent, Process, Performance, and Price.

These five pillars form the basis of the research approach when assessing a fund. The interaction between these pillars is also evaluated in order to understand a fund's overall merit.

[Morningstar Investment Management South Africa](#), is a leading investment services provider in South Africa.



The five pillars form the basis of the research methodology



PEOPLE

The overall quality of a fund's investment team is a significant key to a fund's ability to deliver superior performance relative to its benchmark and/or peers. It's extremely important to establish which individuals make the key decisions on the fund and how conflicts are resolved.



PROCESS

We look for funds with a performance objective and investment process that is sensible, clearly defined, and repeatable. We seek to understand the context in which managers think about risk and how this is expressed when constructing the portfolio.



PARENT

We believe the parent organization is of utmost importance in evaluating funds. Although other factors may have more immediate impact, they would not be sustainable without backing from the fund firm.

The five pillars form the basis of the research methodology



PERFORMANCE

We do not believe past performance is necessarily predictive of future results, and this factor accordingly receives a relatively small weighting in our evaluation process. In particular we strive not to anchor on short-term performance. However, we do believe that the evaluation of Long-term return and risk patterns is vital to determining if a fund is delivering to our expectations.



PRICE

Morningstar and independent academic research has shown that fund expenses are one of the better predictors of future outperformance even when evaluating net-of-fee returns. Given this, costs cannot be ignored. To reflect actual investor experience, price is evaluated within the context of the relevant market or cross-border region.

Our Fees



Platform and Admin fees

First USD 350 000
Next USD 350 000 to 1 000 000
Above USD 1 000 000

Ongoing fee

0.50%
0.25%
0.15%

One twelfth of this charge is payable each month and is subject to a minimum of \$10 per month.

Where the currency is not USD, we use the prevailing exchange rate to calculate our charges.

Financial adviser fee limits

Initial fee : Max 5%
Ongoing fee : Max 2%

Other fees

Foreign Exchange 0.07%

Offshore Core Funds (A-Z)

Fund Name	Sector	Morningstar Rating Overall	Base Currency	Domicile	Investment Type	ISIN	Management fee
Coronation Global Capital Plus P	Mixed Asset - Cautious	3	USD	Ireland	Open-End Fund	IE00BBT3KJ57	0.85%
Coronation Global Emerging Markets P	Equity - Emerging Markets	2	USD	Ireland	Open-End Fund	IE00B433GD87	0.75%
Coronation Global Managed P	Mixed Asset - Balanced	3	USD	Ireland	Open-End Fund	IE00BBPRBG56	0.85%
Coronation Global Strategic Income P	Fixed Int - USD	3	USD	Ireland	Open-End Fund	IE00BBPV5092	0.50%
Dodge & Cox Global Stock Acc USD	IA Global	4	USD	Ireland	Open-End Fund	IE00B54PRV58	0.60%
Fidelity Emerging Markets Y Acc USD	Equity - Emerging Markets	4	USD	Luxembourg	Open-End Fund	LU0346390940	0.80%
Fundsmith Equity I Acc	IA Global	5	GBX	United Kingdom	Open-End Fund	GB00B41YBW71	0.90%
Investec Global Franchise I Gr Acc USD	Equity - International	5	USD	Luxembourg	Open-End Fund	LU0426422076	0.75%
Investec Global Multi-Asset Income I Gr Acc-2 USD	Mixed Asset - Cautious	5	USD	Luxembourg	Open-End Fund	LU0983164699	0.65%
Investec Global Strategic Equity I Gr Acc USD	Equity - International	5	USD	Luxembourg	Open-End Fund	LU0345770563	0.75%
Investec Global Strategic Managed I Gr Acc USD	Mixed Asset - Aggressive	4	USD	Luxembourg	Open-End Fund	LU0345768583	0.75%
iShares Core FTSE 100 UCITS ETF Acc GBP	Equity - UK	3	GBP	Ireland	Exchange-Trade Fund	IE00B53HP851	0.07%
iShares Core MSCI EM IMI UCITS ETF USD	Equity - Emerging Markets	3	USD	Ireland	Exchange-Trade Fund	IE00BKM4GZ66	0.18%
iShares Core MSCI Japan IMI UCITS ETF GBP	Equity - Japan	4	GBP	Ireland	Exchange-Trade Fund	IE00B4L5YX21	0.15%
iShares Core MSCI World UCITS ETF Acc USD	Equity - International	5	USD	Ireland	Exchange-Trade Fund	IE00B4L5Y983	0.20%
iShares Core S&P 500 UCITS ETF Acc USD	Equity - USA	5	USD	Ireland	Exchange-Trade Fund	IE00B5BMR087	0.07%
iShares Developed Markets Property Yield UCITS ETF Acc USD	Property - International	3	USD	Ireland	Exchange-Trade Fund	IE00BFM6T921	0.59%
iShares Global Govt Bond UCITS ETF Acc USD	Fixed Int - Global	5	USD	Ireland	Exchange-Trade Fund	IE00BYZ28V50	0.20%
Merian World Equity I Acc USD	IA Global	4	USD	Ireland	Open-End Fund	IE00B42HMS87	0.75%
Nedgroup Core Global C Acc USD	Mixed Asset - Flexible	4	USD	Ireland	Open-End Fund	IE00BY7Y509	0.25%
Nedgroup Global Equity C	Equity - International	4	USD	Ireland	Open-End Fund	IE00BKXGF987	1.00%
Nedgroup Global Flexible C USD	Mixed Asset - Flexible	4	USD	Ireland	Open-End Fund	IE00BKXGFM15	1.00%
Nedgroup Global Property C USD	Property - International	3	USD	Ireland	Open-End Fund	IE00BD9Y5201	1.00%
Schroder ISF Global Cities Real Estate C Acc NAV USD	Property - International	3	USD	Luxembourg	Open-End Fund	LU0224508670	0.94%
Schroder ISF QEP Global Core C Acc	Equity - Ethical	5	USD	Luxembourg	Open-End Fund	LU0106255481	0.27%
STANLIB European Equity B1	Equity - Europe inc UK	3	EUR	Jersey	Open-End Fund	JE00BD8RK470	0.70%
STANLIB Global Bond B1	Fixed Int - Global	3	USD	Jersey	Open-End Fund	JE00BD8RKR07	0.30%

Offshore Core Funds (By Category)

Fund Name	Global Category	Morningstar Rating Overall	Base Currency	Domicile	Investment Type	ISIN	Management fee
Coronation Global Emerging Markets P	Equity - Emerging Markets	2	USD	Ireland	Open-End Fund	IE00B433GD87	0.75%
Fidelity Emerging Markets Y Acc USD	Equity - Emerging Markets	4	USD	Luxembourg	Open-End Fund	LU0346390940	0.80%
iShares Core MSCI EM IMI UCITS ETF USD	Equity - Emerging Markets	3	USD	Ireland	Exchange-Trade Fund	IE00BKM4GZ66	0.18%
Schroder ISF QEP Global Core C Acc	Equity - Ethical	5	USD	Luxembourg	Open-End Fund	LU0106255481	0.27%
STANLIB European Equity B1	Equity - Europe inc UK	3	EUR	Jersey	Open-End Fund	JE00BD8RK470	0.70%
Investec Global Franchise I Gr Acc USD	Equity - International	5	USD	Luxembourg	Open-End Fund	LU0426422076	0.75%
Investec Global Strategic Equity I Gr Acc USD	Equity - International	5	USD	Luxembourg	Open-End Fund	LU0345770563	0.75%
iShares Core MSCI World UCITS ETF Acc USD	Equity - International	5	USD	Ireland	Exchange-Trade Fund	IE00B4L5Y983	0.20%
Nedgroup Global Equity C	Equity - International	4	USD	Ireland	Open-End Fund	IE00BKXGF987	1.00%
iShares Core MSCI Japan IMI UCITS ETF GBP	Equity - Japan	4	GBP	Ireland	Exchange-Trade Fund	IE00B4L5YX21	0.15%
iShares Core FTSE 100 UCITS ETF Acc GBP	Equity - UK	3	GBP	Ireland	Exchange-Trade Fund	IE00B53HP851	0.07%
iShares Core S&P 500 UCITS ETF Acc USD	Equity - USA	5	USD	Ireland	Exchange-Trade Fund	IE00B5BMR087	0.07%
iShares Global Govt Bond UCITS ETF Acc USD	Fixed Int - Global	5	USD	Ireland	Exchange-Trade Fund	IE00BYZ28V50	0.20%
STANLIB Global Bond B1	Fixed Int - Global	3	USD	Jersey	Open-End Fund	JE00BD8RKR07	0.30%
Coronation Global Strategic Income P	Fixed Int - USD	3	USD	Ireland	Open-End Fund	IE00BBPV5092	0.50%
Dodge & Cox Global Stock Acc USD	IA Global	4	USD	Ireland	Open-End Fund	IE00B54PRV58	0.60%
Fundsmith Equity I Acc	IA Global	5	GBX	United Kingdom	Open-End Fund	GB00B41YBW71	0.90%
Merian World Equity I Acc USD	IA Global	4	USD	Ireland	Open-End Fund	IE00B42HMS87	0.75%
Investec Global Strategic Managed I Gr Acc USD	Mixed Asset - Aggressive	4	USD	Luxembourg	Open-End Fund	LU0345768583	0.75%
Coronation Global Managed P	Mixed Asset - Balanced	3	USD	Ireland	Open-End Fund	IE00BBPRBG56	0.85%
Coronation Global Capital Plus P	Mixed Asset - Cautious	3	USD	Ireland	Open-End Fund	IE00BBT3KJ57	0.85%
Investec Global Multi-Asset Income I Gr Acc-2 USD	Mixed Asset - Cautious	5	USD	Luxembourg	Open-End Fund	LU0983164699	0.65%
Nedgroup Core Global C Acc USD	Mixed Asset - Flexible	4	USD	Ireland	Open-End Fund	IE00BYY7YS09	0.25%
Nedgroup Global Flexible C USD	Mixed Asset - Flexible	4	USD	Ireland	Open-End Fund	IE00BKXGFM15	1.00%
iShares Developed Markets Property Yield UCITS ETF Acc USD	Property - International	3	USD	Ireland	Exchange-Trade Fund	IE00BFM6T921	0.59%
Nedgroup Global Property C USD	Property - International	3	USD	Ireland	Open-End Fund	IE00BD9Y5201	1.00%
Schroder ISF Global Cities Real Estate C Acc NAV USD	Property - International	3	USD	Luxembourg	Open-End Fund	LU0224508670	0.94%

Glossary

Morningstar Rating™ for Funds

The Morningstar Rating™ for funds, or "star rating", is calculated for managed products (including mutual funds, variable annuity and variable life subaccounts, exchange traded funds, closed-end funds, and separate accounts) with at least a three-year history. Exchange traded funds and open-ended mutual funds are considered a single population for comparative purposes. It is calculated based on a Morningstar Risk-Adjusted Return measure that accounts for variation in a managed product's monthly excess performance, placing more emphasis on downward variations and rewarding consistent performance.

The top 10% of products in each product category receive 5 stars, the next 22.5% receive 4 stars, the next 35% receive 3 stars, the next 22.5% receive 2 stars, and the bottom 10% receive 1 star. The Overall Morningstar Rating for a managed product is derived from a weighted average of the performance figures associated with its three-, five-, and 10-year (if applicable) Morningstar Rating metrics. The weights are: 100% three-year rating for 36-59 months of total Returns, 60% five-year rating/40% three-year rating for 60-119 months of total returns, and 50% 10-year rating/30% five-year rating/20% three-year rating for 120 or more months of total returns. While the 10-year overall star rating formula seems to give the most weight to the 10-year period, the most recent three-year period actually has the greatest impact because it is included in all three rating periods.

Morningstar Category

Morningstar Category is assigned by placing funds into peer groups based on their underlying holdings. The underlying securities in each portfolio are the primary factor in our analysis as the investment objective and investment strategy stated in a fund's prospectus may not be sufficiently detailed for our proprietary classification methodology. Funds are placed in a category based on their portfolio statistics and compositions over the past three years. Analysis of performance and other indicative facts are also considered. If the fund is new and has no portfolio history, Morningstar estimates where it will fall before giving it a permanent category assignment. Categories may be changed based on recent changes to the portfolio.

Disclaimer

The information and content (collectively 'information') provided herein are provided by STANLIB as general information. STANLIB does not guarantee the suitability or potential value of any information or particular investment source. Any information herein is not intended nor does it constitute financial, tax, legal, investment, or other advice.

Risks may apply to all of the investments made available to the investor.

The value of these investments, and any income generated from them, is not guaranteed, it can fall as well as rise. Past performance is not a guide to the returns they may receive in the future.

By investing in the INN8 Offshore Investment Platform, you are accepting our terms and conditions (T&C's) or the terms of business (ToB).

The Morningstar name and logo are registered trademarks of Morningstar Inc., the parent company of Morningstar Investment Management South Africa (Pty) Ltd which is an authorized financial services provider (FSP 45679) and the entity who provides the Core Funds list to STANLIB. Morningstar shall have no responsibility to any investors who choose to make any investments in the funds on this list.

Standard Bank House, PO Box 583, 47-49 La Motte Street, St Helier, Jersey, JE4 8XR, Channel Islands. **T** +44 (0) 1534 881400

Registration: STANLIB Fund Managers Jersey Limited is regulated by the Jersey Financial Services Commission. STANLIB Fund Managers Jersey Limited is a wholly owned subsidiary of STANLIB Asset Management (Pty) Limited, which is wholly owned by STANLIB Limited, which is wholly owned by Liberty Holdings Limited. Trademark – INN8

INN8.co.za

